

## Locking Pins

### Stainless Steel Pin, with Axial Lock (Pawl)

#### SPECIFICATION

Knob / Push button / Slide

- Plastic
- Temperature resistant up to 80 °C
- Knob: black-gray
- Push button: red

Pin

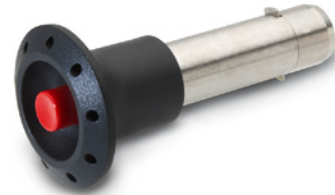
Stainless Steel AISI 303

Pawl

Stainless Steel AISI 304 (sheet metal)

Spring

Stainless Steel AISI 301



#### INFORMATION

Locking pins with axial lock GN 114.3 are used for quick fixing, connecting and locking of various jig and fixture systems. A typical application is location pins which have to be often removed and re-placed again.

The rectangular pawls made of Stainless Steel sheet metal keep the locking pin in an axial position in the bore. It can be retracted by pressing the button, once released it returns the pressure spring into its locking position.

The technical appendix contains the load capacities for the double-sided shearing resistance (breaking strength).

- Range of lock pins (see page 868)

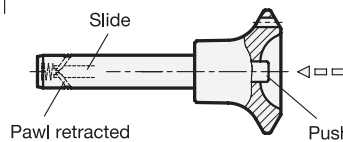
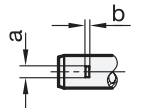
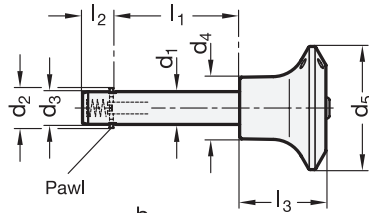
#### ACCESSORY

- Ball Chains GN 111 (see page 904) / Ball chains GN 111.5 (see page 905)
- Retaining cables GN 111.2 (see page 906)
- Spiral retaining cables GN 111.4 (see page 908)

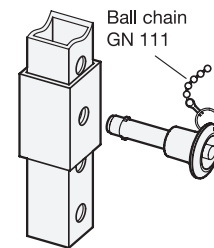
#### TECHNICAL INFORMATION

- ISO-Fundamental Tolerances (see page A21)
- Stainless Steel characteristics (see page A26)

Bore for key ring (ball chain)



#### Application example



### GN 114.3

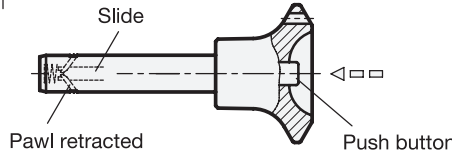
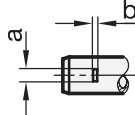
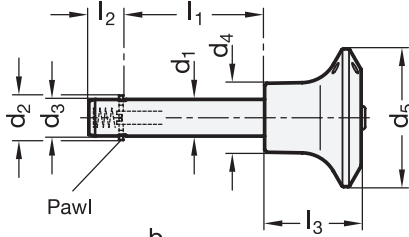
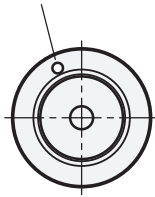
STAINLESS STEEL

Description	d1 -0.1	l1 +0.4	a	b	d2	d3	d4	d5	l2	l3	Load in kN ≈ (Double sided shear force) see information	⚖
GN 114.3-6-10	6	10	2.3	0.5	7.3+0.5	5.9	15	30	7	21	17	12
GN 114.3-6-12	6	12	2.3	0.5	7.3+0.5	5.9	15	30	7	21	17	12
GN 114.3-6-16	6	16	2.3	0.5	7.3+0.5	5.9	15	30	7	21	17	13
GN 114.3-6-20	6	20	2.3	0.5	7.3+0.5	5.9	15	30	7	21	17	13
GN 114.3-6-25	6	25	2.3	0.5	7.3+0.5	5.9	15	30	7	21	17	14
GN 114.3-6-30	6	30	2.3	0.5	7.3+0.5	5.9	15	30	7	21	17	14
GN 114.3-6-35	6	35	2.3	0.5	7.3+0.5	5.9	15	30	7	21	17	16
GN 114.3-6-40	6	40	2.3	0.5	7.3+0.5	5.9	15	30	7	21	17	16
GN 114.3-6-45	6	45	2.3	0.5	7.3+0.5	5.9	15	30	7	21	17	17
GN 114.3-6-50	6	50	2.3	0.5	7.3+0.5	5.9	15	30	7	21	17	18
GN 114.3-6-60	6	60	2.3	0.5	7.3+0.5	5.9	15	30	7	21	17	19
GN 114.3-6-70	6	70	2.3	0.5	7.3+0.5	5.9	15	30	7	21	17	21
GN 114.3-6-80	6	80	2.3	0.5	7.3+0.5	5.9	15	30	7	21	17	25
GN 114.3-8-10	8	10	2.8	0.6	9.8+0.5	7.9	15	30	8.4	21	35	27
GN 114.3-8-16	8	16	2.8	0.6	9.8+0.5	7.9	15	30	8.4	21	35	16
GN 114.3-8-20	8	20	2.8	0.6	9.8+0.5	7.9	15	30	8.4	21	35	18
GN 114.3-8-25	8	25	2.8	0.6	9.8+0.5	7.9	15	30	8.4	21	35	19
GN 114.3-8-30	8	30	2.8	0.6	9.8+0.5	7.9	15	30	8.4	21	35	20
GN 114.3-8-35	8	35	2.8	0.6	9.8+0.5	7.9	15	30	8.4	21	35	20
GN 114.3-8-40	8	40	2.8	0.6	9.8+0.5	7.9	15	30	8.4	21	35	24
GN 114.3-8-45	8	45	2.8	0.6	9.8+0.5	7.9	15	30	8.4	21	35	26
GN 114.3-8-50	8	50	2.8	0.6	9.8+0.5	7.9	15	30	8.4	21	35	27
GN 114.3-8-60	8	60	2.8	0.6	9.8+0.5	7.9	15	30	8.4	21	35	43
GN 114.3-8-70	8	70	2.8	0.6	9.8+0.5	7.9	15	30	8.4	21	35	44
GN 114.3-8-80	8	80	2.8	0.6	9.8+0.5	7.9	15	30	8.4	21	35	48
GN 114.3-8-90	8	90	2.8	0.6	9.8+0.5	7.9	15	30	8.4	21	35	52
GN 114.3-8-100	8	100	2.8	0.6	9.8+0.5	7.9	15	30	8.4	21	35	53
GN 114.3-10-15	10	15	3.3	1	11.7+1	9.9	18	34	9.8	26	47	26
GN 114.3-10-20	10	20	3.3	1	11.7+1	9.9	18	34	9.8	26	47	27
GN 114.3-10-25	10	25	3.3	1	11.7+1	9.9	18	34	9.8	26	47	29
GN 114.3-10-30	10	30	3.3	1	11.7+1	9.9	18	34	9.8	26	47	31
GN 114.3-10-35	10	35	3.3	1	11.7+1	9.9	18	34	9.8	26	47	35
GN 114.3-10-40	10	40	3.3	1	11.7+1	9.9	18	34	9.8	26	47	36
GN 114.3-10-45	10	45	3.3	1	11.7+1	9.9	18	34	9.8	26	47	39
GN 114.3-10-50	10	50	3.3	1	11.7+1	9.9	18	34	9.8	26	47	41
GN 114.3-10-60	10	60	3.3	1	11.7+1	9.9	18	34	9.8	26	47	45
GN 114.3-10-70	10	70	3.3	1	11.7+1	9.9	18	34	9.8	26	47	48
GN 114.3-10-80	10	80	3.3	1	11.7+1	9.9	18	34	9.8	26	47	52
GN 114.3-10-90	10	90	3.3	1	11.7+1	9.9	18	34	9.8	26	47	59
GN 114.3-10-100	10	100	3.3	1	11.7+1	9.9	18	34	9.8	26	47	62
GN 114.3-10-110	10	110	3.3	1	11.7+1	9.9	18	34	9.8	26	47	66
GN 114.3-10-120	10	120	3.3	1	11.7+1	9.9	18	34	9.8	26	47	72
GN 114.3-12-20	12	20	3.8	1	13.7+1	11.9	18	34	11.3	26	75	33
GN 114.3-12-25	12	25	3.8	1	13.7+1	11.9	18	34	11.3	26	75	38
GN 114.3-12-30	12	30	3.8	1	13.7+1	11.9	18	34	11.3	26	75	42
GN 114.3-12-35	12	35	3.8	1	13.7+1	11.9	18	34	11.3	26	75	45
GN 114.3-12-40	12	40	3.8	1	13.7+1	11.9	18	34	11.3	26	75	49
GN 114.3-12-45	12	45	3.8	1	13.7+1	11.9	18	34	11.3	26	75	53
GN 114.3-12-50	12	50	3.8	1	13.7+1	11.9	18	34	11.3	26	75	57
GN 114.3-12-60	12	60	3.8	1	13.7+1	11.9	18	34	11.3	26	75	63
GN 114.3-12-70	12	70	3.8	1	13.7+1	11.9	18	34	11.3	26	75	69
GN 114.3-12-80	12	80	3.8	1	13.7+1	11.9	18	34	11.3	26	75	80

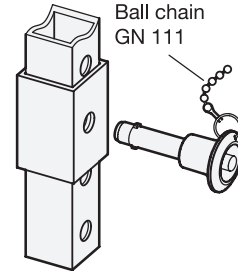


Indexing elements

Bore for key ring (ball chain)



Application example



GN 114.3

STAINLESS STEEL

Description	d1 -0.1	l1 +0.4	a	b	d2	d3	d4	d5	l2	l3	Load in kN ≈ (Double sided shear force) see information	⚖
GN 114.3-12-90	12	90	3.8	1	13.7+1	11.9	18	34	11.3	26	75	86
GN 114.3-12-100	12	100	3.8	1	13.7+1	11.9	18	34	11.3	26	75	95
GN 114.3-12-110	12	110	3.8	1	13.7+1	11.9	18	34	11.3	26	75	99
GN 114.3-12-120	12	120	3.8	1	13.7+1	11.9	18	34	11.3	26	75	108
GN 114.3-16-30	16	30	3.8	1.2	18.7+1	15.9	22	40	14.2	32	138	70
GN 114.3-16-35	16	35	4.8	1.2	18.7+1	15.9	22	40	14.2	32	138	85
GN 114.3-16-40	16	40	4.8	1.2	18.7+1	15.9	22	40	14.2	32	138	92
GN 114.3-16-45	16	45	4.8	1.2	18.7+1	15.9	22	40	14.2	32	138	99
GN 114.3-16-50	16	50	4.8	1.2	18.7+1	15.9	22	40	14.2	32	138	106
GN 114.3-16-60	16	60	4.8	1.2	18.7+1	15.9	22	40	14.2	32	138	119
GN 114.3-16-70	16	70	4.8	1.2	18.7+1	15.9	22	40	14.2	32	138	132
GN 114.3-16-80	16	80	4.8	1.2	18.7+1	15.9	22	40	14.2	32	138	145
GN 114.3-16-90	16	90	4.8	1.2	18.7+1	15.9	22	40	14.2	32	138	159
GN 114.3-16-100	16	100	4.8	1.2	18.7+1	15.9	22	40	14.2	32	138	172
GN 114.3-16-110	16	110	4.8	1.2	18.7+1	15.9	22	40	14.2	32	138	186
GN 114.3-16-120	16	120	4.8	1.2	18.7+1	15.9	22	40	14.2	32	138	198
GN 114.3-16-130	16	130	4.8	1.2	18.7+1	15.9	22	40	14.2	32	138	211
GN 114.3-16-140	16	140	4.8	1.2	18.7+1	15.9	22	40	14.2	32	138	225
GN 114.3-16-150	16	150	4.8	1.2	18.7+1	15.9	22	40	14.2	32	138	239
GN 114.3-20-30	20	30	4.8	1.2	22.7+1	19.8	25	40	14.8	33	228	117
GN 114.3-20-35	20	35	4.8	1.2	22.7+1	19.8	25	40	14.8	33	228	128
GN 114.3-20-40	20	40	4.8	1.2	22.7+1	19.8	25	40	14.8	33	228	139
GN 114.3-20-45	20	45	4.8	1.2	22.7+1	19.8	25	40	14.8	33	228	151
GN 114.3-20-50	20	50	4.8	1.2	22.7+1	19.8	25	40	14.8	33	228	162
GN 114.3-20-60	20	60	4.8	1.2	22.7+1	19.8	25	40	14.8	33	228	185
GN 114.3-20-70	20	70	4.8	1.2	22.7+1	19.8	25	40	14.8	33	228	206
GN 114.3-20-80	20	80	4.8	1.2	22.7+1	19.8	25	40	14.8	33	228	229
GN 114.3-20-90	20	90	4.8	1.2	22.7+1	19.8	25	40	14.8	33	228	247
GN 114.3-20-100	20	100	4.8	1.2	22.7+1	19.8	25	40	14.8	33	228	267
GN 114.3-20-110	20	110	4.8	1.2	22.7+1	19.8	25	40	14.8	33	228	287
GN 114.3-20-120	20	120	4.8	1.2	22.7+1	19.8	25	40	14.8	33	228	307
GN 114.3-20-130	20	130	4.8	1.2	22.7+1	19.8	25	40	14.8	33	228	327
GN 114.3-20-140	20	140	4.8	1.2	22.7+1	19.8	25	40	14.8	33	228	347
GN 114.3-20-150	20	150	4.8	1.2	22.7+1	19.8	25	40	14.8	33	228	368

Indexing elements 8